

SAVERXWARE INTEGRATED GPS MAPPING

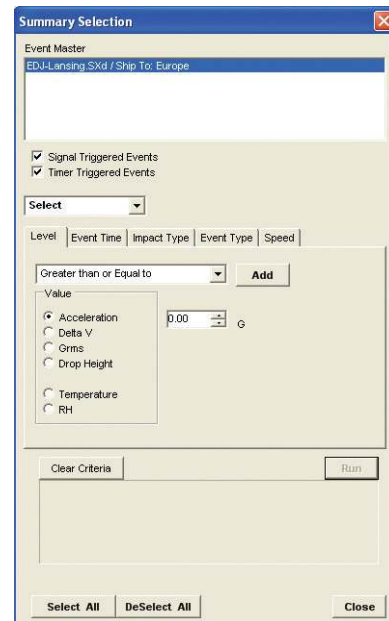
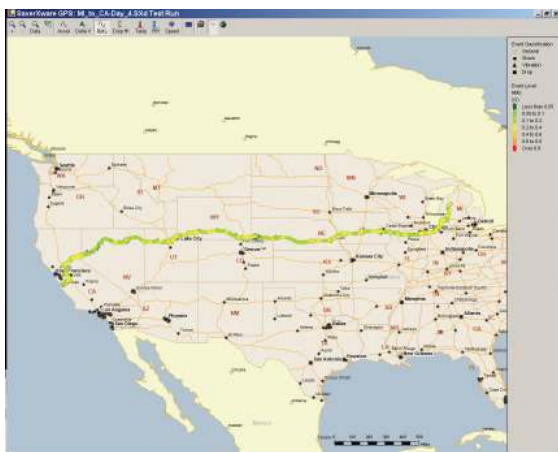
SaverXware can import and plot GPS position data from various originating sources. With seamless integration of GPS data, Lansmont **SAVER™** family of instruments can not only identify specifically **when** significant events occur; they can identify exactly **where** they occur!

SaverXware intelligently associates instrument event time with GPS position data, culminating in an interactive geographic map which plots **on-the-spot** event location. Users can take advantage of SaverXware's powerful data filtering functionality to customize their displayed map.



Filter and **map** event data based upon user defined criteria such as:

- *Event Severity*
- *Event Date and Time*
- *Event Type (shock, drop, vibration)*
- *Impact Orientation and Type*
- *Speed During Transport*
- *Temperature and Humidity*



Corporate Headquarters

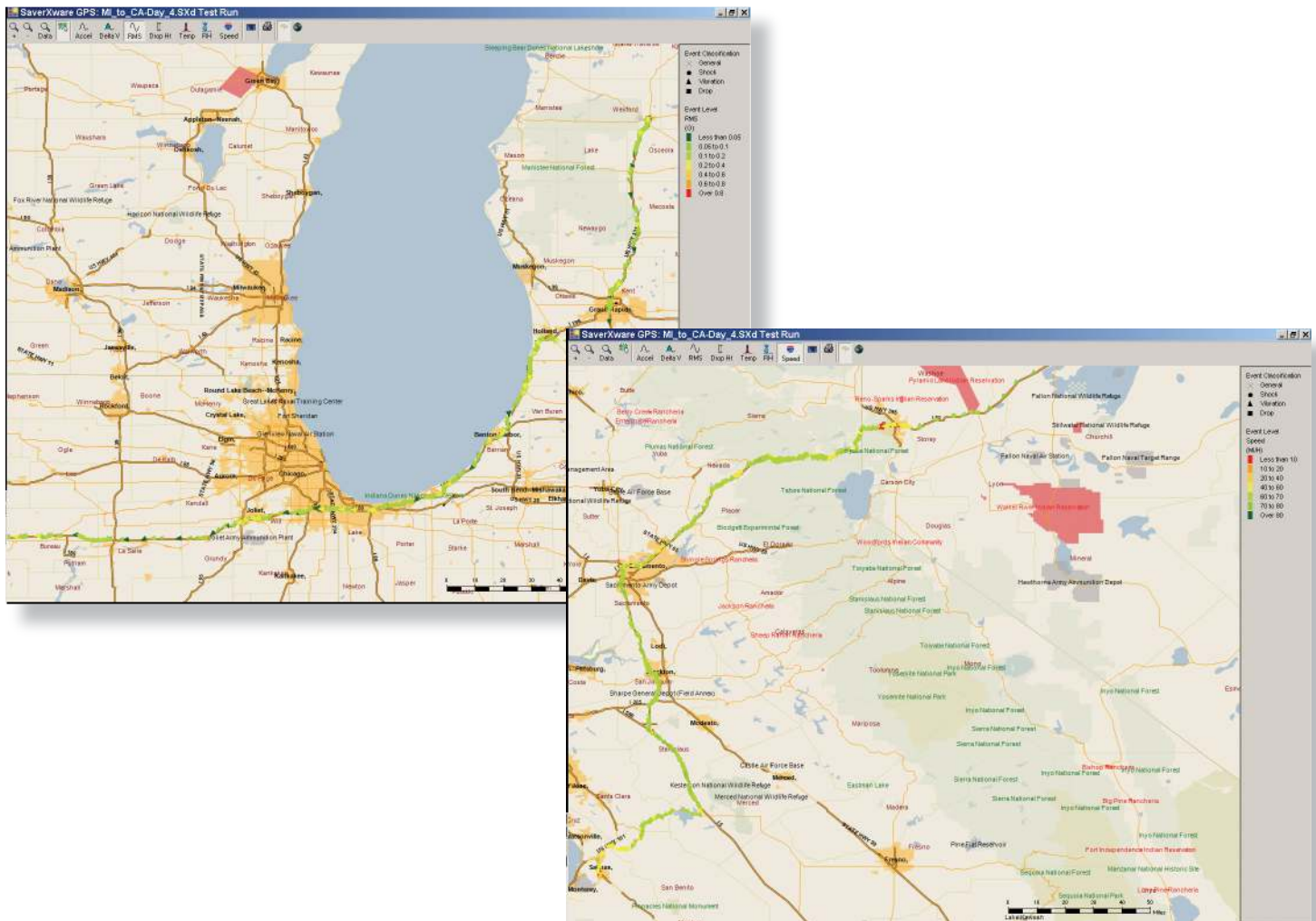
17 Mandeville Court, Monterey, CA 93940

1-800-LANSMONT • www.lansmont.com



SaverXware GPS Analysis and Reporting

Zoom into targeted geographic areas to obtain better resolution and understanding of hazard characteristics associated with specific roadways, cargo terminals, or rail switching yards.



Lansmont's **SAVER™** family instruments tell "the story" regarding what happens when products and vehicles undergo transport. By strategically exercising SaverXware's reporting capability the summarized shock, vibration, and atmospheric conditions provide the *story-line* while the integrated GPS data provides the supporting *illustrations*.

SaverXware can import and integrate GPS data not only from Lansmont's current **SAVER-GPS** hardware products, but also from various loggers purchased separately and available commercially off-the-shelf. Contact Lansmont's Customer Support Group to request technical consultation associated with hardware options and configurations.