

## TouchTest Compression – TTC3 Control System

*(used with Lansmont Compression Test Systems)*

Lansmont is proud to present its latest addition to the TouchTest control systems, TouchTest Compression 3!

Based on the extremely popular TouchTest Compression control system, TTC3 adds many new and powerful features. Among these features are the ability to integrate compression test results with all of your favorite Windows™ applications, network features that allow quick and easy transmission of test results via e-mail, extremely simple set-up of standard compression tests, and a high level of programmability for creating custom test profiles.

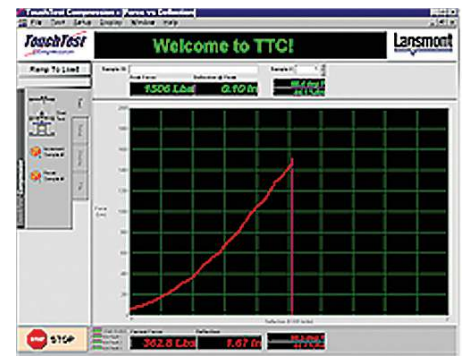
TTC3 comes in two versions. The full SystemStation version includes computer, interface, large LCD flat touch screen display, and all interconnecting cables conveniently packaged in a roll-around floor standing console. Lansmont also offers TTC3 in a bench-top version, which includes computer, CRT monitor, interface, and all interconnecting cables. You provide the bench or cart for the computer, everything else is the same!

If you currently have an older Lansmont compression test system, the new TTC3 controller has been designed to easily retro-fit your existing machine, enabling you to have the latest state-of-the-art compression tester without the investment of an entirely new compression tester. Either full SystemStation option or bench-top option may be selected, and the upgrade even includes a brand new hydraulic power supply, insuring your machine is better than new.



### Features:

- Full range of test capabilities, including Constant Deflection Rate Compression Testing, Ramp to Load and Release Compression Testing, Load Profile - Stacking Simulation Test, and Deflection Profile Test
- Windows™ simplicity
- Network ready
- SystemStation and Bench-Top version
- Easily upgradeable to existing machines



17 Mandeville Court, Monterey, CA 93940

1-800-LANSMONT • [www.lansmont.com](http://www.lansmont.com)

# TouchTest Compression – TTC3 Control System

## TECHNICAL SPECIFICATIONS

| TOUCHTEST<br>COMPRESSION CONTROLS | SYSTEMSTATION<br>VERSION                           | BENCH-TOP<br>VERSION                               |
|-----------------------------------|--|--|
| <b>PHYSICAL</b>                   |  |  |
| Computer                          | Windows™ Based, Pentium PC                         | Windows™ Based, Pentium PC                         |
| Monitor                           | Touch-Screen Color 17" LCD                         | Color 17" Monitor                                  |
| Printer                           | Color Ink-Jet Printer                              | Color Ink-Jet Printer                              |
| Mounting                          | Fully Contained SystemStation Work Center          | Packaged for use on Computer Table or Cart         |
| <b>INTERFACE</b>                  |  |  |
| Interface                         | Lansmont Interface, Fully Integrated               | Lansmont Interface, Fully Integrated               |
| <b>SOFTWARE</b>                   |  |  |
| Software                          | Lansmont TouchTest Compression Software. Includes: | Lansmont TouchTest Compression Software. Includes: |
|                                   | Constant Rate Test                                 | Constant Rate Test                                 |
|                                   | Constant Load Test                                 | Constant Load Test                                 |
|                                   | Ramp-to-Load and Release Test                      | Ramp-to-Load and Release Test                      |
|                                   | User Defined Profiles                              | User Defined Profiles                              |
| <b>POWER</b>                      |  |  |
| Voltage                           | 100 – 220 VAC                                      | 100 – 220 VAC                                      |
| Frequency                         | 50 Hz – 60 Hz                                      | 50 Hz – 60 Hz                                      |
| Phase                             | Single Phase                                       | Single Phase                                       |